

PEN USER MANUAL

Teriparatide 20 micrograms/80 microliters solution for injection in pre-filled pen

Instructions for use

Before you use your new pen, please read the section *Instructions for use* completely. Follow the directions carefully when using the pen. Also read the package leaflet provided.

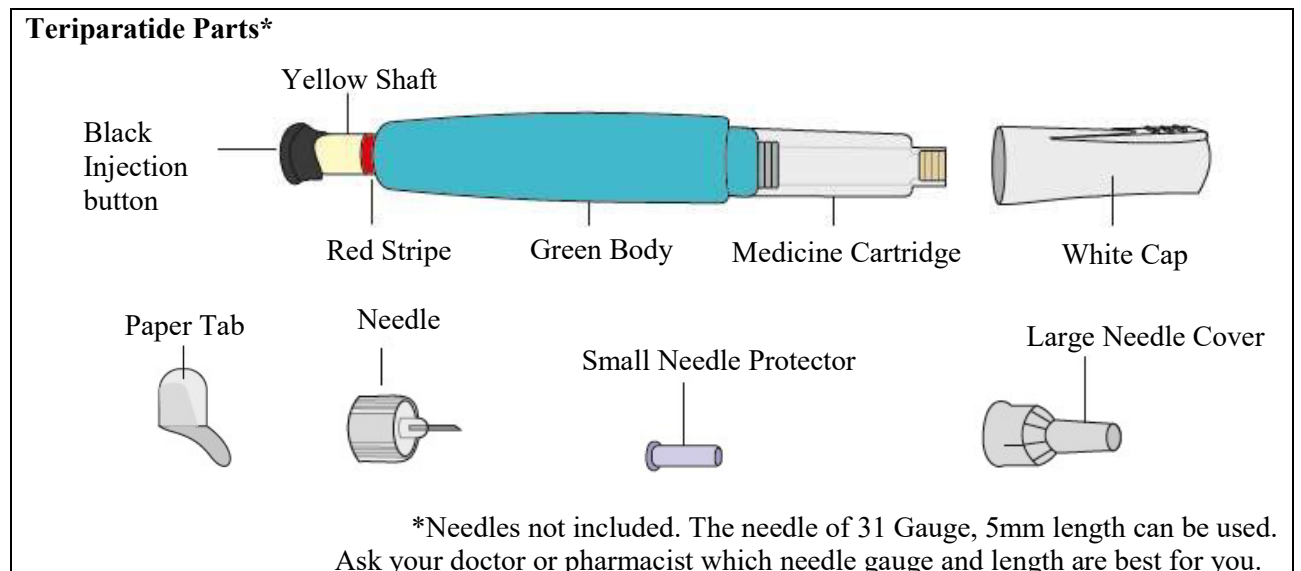
For instructions for use video, please scan the QR code or use the link:

<https://www.pharmaqr.info/tpten>.



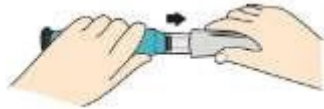
Do not share your pen or your needles as this may risk transmission of infectious agents.

Your pen contains 28 days of medicine.



Always wash your hands before every injection. Prepare the injection site as directed by your doctor or pharmacist.

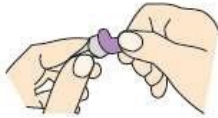
1



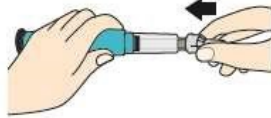
Pull off white cap

2

Attach new needle



Pull off paper tab

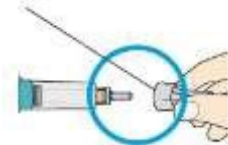


Push needle **straight onto medicine cartridge.**



Screw on needle until firmly attached.

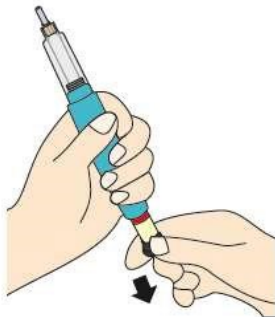
Large Needle Cover



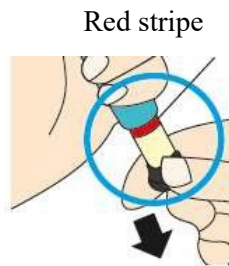
Pull off large needle cover and **save it.**

3

Set dose



Pull out black injection button **until it stops.**



Check to make sure red stripe shows.



Pull off small needle protector and throw away.

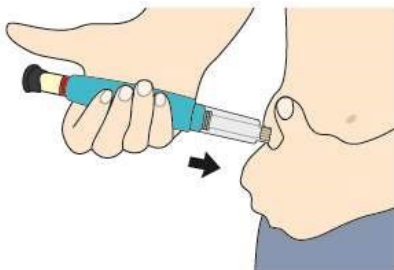
If you cannot pull out the black injection button see *Troubleshooting Problem E*.

Note: After removal of inner needle protector, you may see drop(s) of medicine coming out of the needle.

It is normal and will not affect your dose.

4

Inject dose



Gently hold a fold of skin from thigh or abdomen and insert needle straight into skin.



Push in black injection button until it stops.
Hold it in and **count to 5 sl-o-w-l-y.**
Then pull the needle from skin.

IMPORTANT

5
Confirm dose



After completing the injection

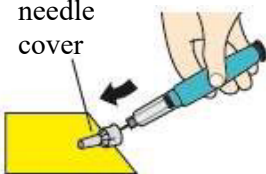
Once the needle is removed from the skin, **check** to make sure the black injection button is all the way in. If the yellow shaft does not show, you have completed the injection steps correctly.



You should **NOT** see any of the yellow shaft. If you do and have already injected, do not inject yourself a second time on the same day. Instead, you **MUST reset Teriparatide** (See Troubleshooting Problem A).

6
Remove needle

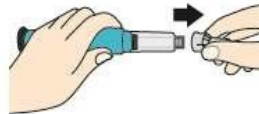
Large
needle
cover



Put large needle
Cover on needle.



Unscrew the needle all the way
by giving the large needle
cover 3 to 5 complete turns.



Pull off needle and throw
away as directed by
your doctor or pharmacist.



Push white cap back on.
Place Teriparatide
in the refrigerator
immediately after use.

The directions regarding needle handling are not intended to replace local, healthcare professional or institutional policies.



**Teriparatide 20 micrograms/80 microliters
solution for injection in pre-filled pen**

Troubleshooting

Problem

A. The yellow shaft is still showing after I push in the black injection button.

How do I reset my Teriparatide ?



Solution

To reset the Teriparatide, follow the steps below.

- 1) **If you have already injected, DO NOT inject yourself a second time on the same day.**
- 2) Remove the needle.
- 3) Attach a new needle, pull off the large needle cover and save it.
- 4) Pull out the black injection button until it stops. Check to make sure the red stripe shows.
- 5) Pull off the small needle protector and throw away.
- 6) Point the needle down into an empty container. Push in the black injection button until it stops. Hold it in and count to 5 s-l-o-w-l-y. You may see a small stream or drop of fluid. **When you have finished, the black injection button should be all the way in.**
- 7) If you still see the yellow shaft showing, please contact your doctor or pharmacist
- 8) Put the large needle cover on needle. Unscrew the needle all the way by giving the needle cover 3 to 5 complete turns. Pull off needle cover and throw away as directed by your doctor or pharmacist. Push the white cap back on, and place Teriparatide in the refrigerator.

You can prevent this problem by **always using a NEW needle for each injection, and by pushing the black injection button all the way in and counting to 5 s-l-o-w-l-y.**

B. How can I tell if my Teriparatide works?



The Teriparatide is designed to inject the full dose every time it is used according to the directions in the section *How to use*. The black injection button will be all the way in to show that the full dose has been injected from the Teriparatide.

Remember to use a new needle every time you inject to be sure your Teriparatide will work properly.

C. I see an air bubble in my Teriparatide.



A small air bubble will not affect your dose nor will it harm you. You can continue to take your dose as usual.

D. I cannot get the needle off.



- 1) Put the large needle cover on the needle.
- 2) Use the large needle cover to unscrew the needle.
- 3) Unscrew the needle all the way by giving the large needle cover 3 to 5 complete turns.
- 4) If you still cannot get the needle off, ask someone to help you.

E. What should I do if I cannot pull out the black injection button?



Change to a new Teriparatide to take your dose as directed by your doctor or pharmacist.

This indicates that you have now used all the medicine that can be injected accurately even though you may still see some medicine left in the cartridge.

Cleaning and Storage

Cleaning Your Teriparatide

- Wipe the outside of the Teriparatide with a damp cloth.
- Do not place the Teriparatide in water, or wash or clean it with any liquid.

Storing Your Teriparatide

- Refrigerate the Teriparatide immediately after every use. Read and follow the instructions in the *Information for the Patient leaflet* on how to store your pen.
- Do not store the Teriparatide with a needle attached as this may cause air bubbles to form in the cartridge.
- Store the Teriparatide with the white cap on.
- Never store the Teriparatide in the freezer.
- If the medicine has been frozen, throw the device away and use a new Teriparatide.
- If the Teriparatide has been left out of the refrigerator, do not throw the pen away. Place the pen back in the refrigerator and contact your doctor or pharmacist.

Disposal of Pen Needles and Device

Disposal of Pen Needles and Teriparatide Device

- Before disposing of the Teriparatide device, be sure to remove the pen needle.
- Put used needles in a sharps container or a hard plastic container with a secure lid. Do not throw needles directly into your household waste.
- Do not recycle the filled sharps container.
- Ask your healthcare professional about options to dispose of the pen and the sharps container properly.
- The directions regarding needle handling are not intended to replace local, healthcare professional or institutional policies.
- Dispose of the device 28 days after first use.

Other Important Notes

- The Teriparatide contains 28 days of medicine.
- Do not transfer the medicine into a syringe.
- Write down your first injection date on a calendar.
- Read and follow the instructions in the *Information for the Patient leaflet* for using the medicine.
- Check the Teriparatide label to make sure you have the correct medicine, and that it has not expired.
- Contact your doctor or pharmacist if you notice any of the following: -
 - The Teriparatide appears damaged
 - The solution is NOT clear, colourless and free of particles
- Use a new needle for each injection.
- During injection, you may hear one or more clicks – this is a normal device operation.
- The Teriparatide is not recommended for use by the blind or visually impaired persons without the assistance of a person trained in the proper use of the device.
- Keep the Teriparatide out of the sight and reach of children.