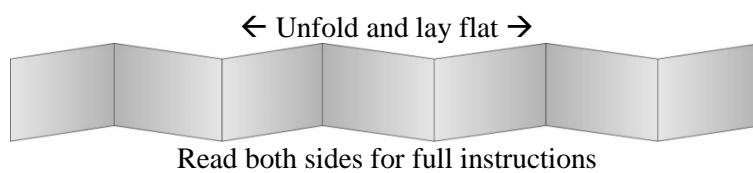
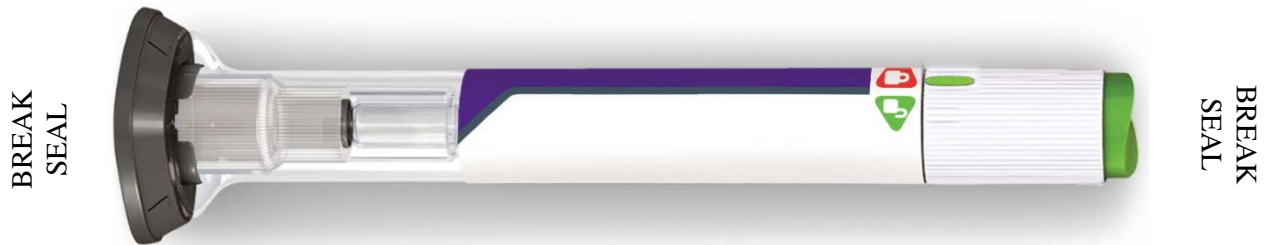


Instructions for use

Trulicity® 3 mg solution for injection in pre-filled pen dulaglutide



ABOUT TRULICITY PRE-FILLED PEN

Please read these instructions for use and the information for the patient in the package leaflet carefully and completely before using your pre-filled pen. Talk to your doctor, pharmacist or nurse about how to inject Trulicity correctly.

- The pen is a disposable, pre-filled delivery device that is ready to use. Each pen contains one weekly dose of Trulicity (3 mg). Each pen delivers one dose only.
- **Trulicity is administered once a week.** You may want to mark your calendar to remind you when to inject your next dose.
- When you press the green injection button, the pen will automatically insert the needle **into your skin**, inject the medicine, and pull back (retract) the needle **after the injection is complete**.

BEFORE YOU GET STARTED

Remove

from the refrigerator.

Leave the base cap on until you are ready to inject.

Check

the label to make sure you have the correct medicine and it has not expired.

Inspect

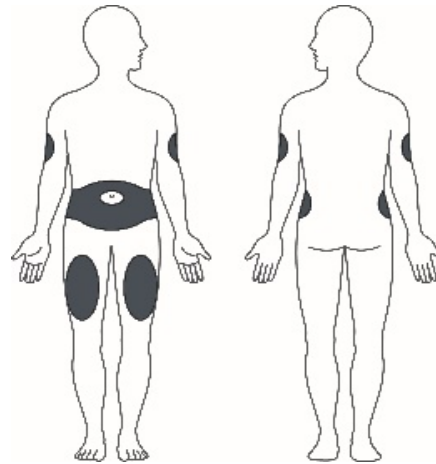
the pen. Do not use if you notice that the pen is damaged, or the medicine is cloudy, discoloured or has particles in it.

Prepare

by washing your hands.

CHOOSE YOUR INJECTION SITE

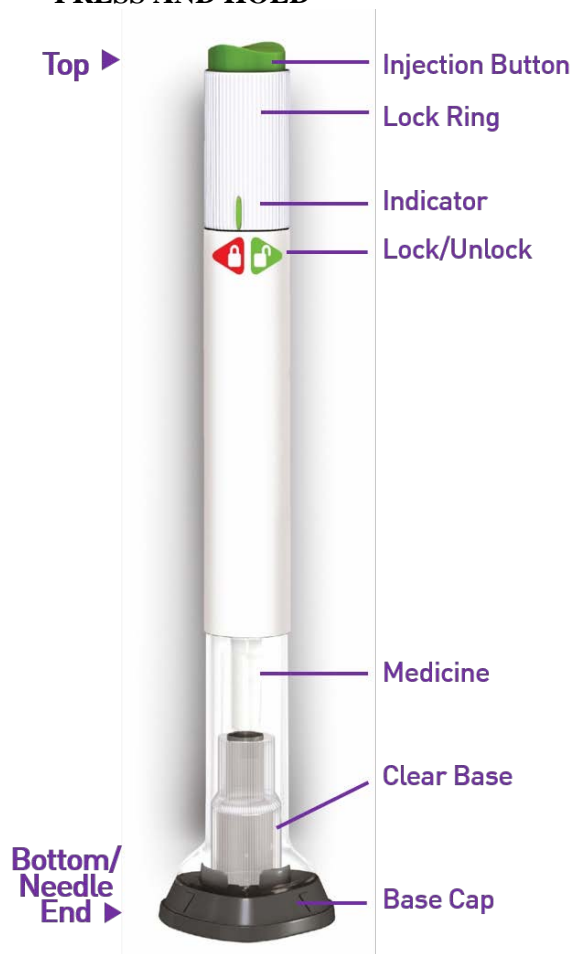
- Your doctor, pharmacist or nurse can help you choose the injection site that is best for you.
- You may inject the medicine into your stomach (abdomen) or thigh.
- Another person may give you the injection in your upper arm.
- Change (rotate) your injection site each week. You may use the same area of your body, but be sure to choose a different injection site in that area.



FRONT

BACK

1. **UNCAP**
2. **PLACE AND UNLOCK**
3. **PRESS AND HOLD**

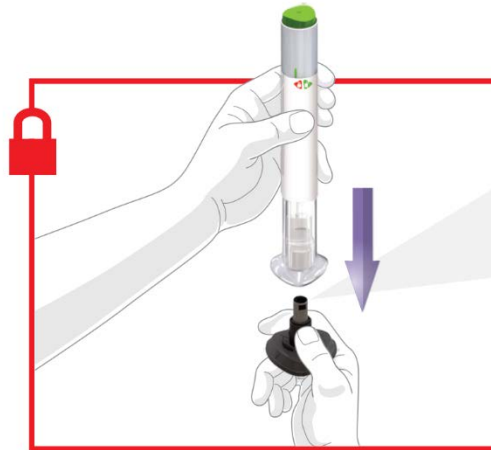


1 UNCAP

- Make sure the pen is **locked**.
- Pull off the grey base cap.

Do not put the base cap back on – this could damage the needle. Do not touch the needle.

- When removed, the grey base cap appears as shown and can be discarded.



← Grey base cap

If the grey base cap does not look like the image above:

- Do not** use the Pen.
- Safely store the Pen and cap and contact Lilly.
- Use a new Pen.

2 PLACE AND UNLOCK

- Place the clear base flat and firmly against your skin at the injection site.

- Unlock** by turning the lock ring.

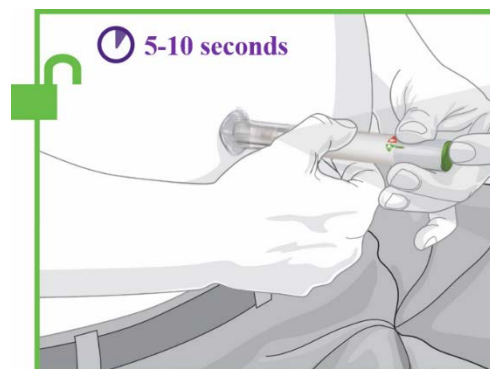


3 PRESS AND HOLD

- Press and hold the green injection button; you will hear a loud click.

- !** Continue holding the clear base firmly against your skin until you hear a second click. This occurs when the needle starts retracting in about 5-10 seconds.

- Remove the pen from your skin.



- You will know your injection is complete when the grey part is visible.**

IMPORTANT INFORMATION

Storage and Handling

Disposal of Pen

Commonly Asked Questions

Other Information

Where to Learn More

STORAGE AND HANDLING

- The pen contains glass parts. Handle it carefully. If you drop it on a hard surface, do not use it. Use a new pen for your injection.
- Store your pen in the refrigerator.
- When refrigeration is not possible, you can keep your pen at room temperature (below 30°C) for up to a total of 14 days.
- Do not freeze your pen. If the pen has been frozen, **DO NOT USE**.
- Store the pen in the original package in order to protect from light.
- Keep the pen out of sight and reach of children.
- For complete information about proper storage, read the Information for the patient.

DISPOSAL OF PEN

- Dispose of the pen in a sharps container or as directed by your doctor, pharmacist or nurse.
- Do not recycle the filled sharps container.
- Ask your doctor, pharmacist or nurse about how to dispose of medicines you no longer use.



COMMONLY ASKED QUESTIONS

What if I see an air bubble in my pen?

Air bubbles are normal. They will not harm you or affect your dose.

What if I unlock the pen and press the green injection button before pulling off the base cap?

Do not remove the base cap and do not use the pen. Dispose of the pen as directed by your doctor, pharmacist or nurse. Inject your dose using another pen.

What if there is a drop of liquid on the tip of the needle when I remove the base cap?

A drop of liquid on the tip of the needle is not unusual and will not affect your dose.

Do I need to hold the injection button down until the injection is complete?

This is not necessary, but it may help you keep the pen steady and firm against your skin.

I heard more than two clicks during my injection - two louder clicks and a soft one. Did I get my complete injection?

Some patients may hear a soft click right before the second loud click. That is the normal operation of the pen. Do not remove the pen from your skin until you hear the second louder click.

What if there is a drop of liquid or blood on my skin after my injection?

This is not unusual and will not affect your dose.

I'm not sure my pen worked correctly.

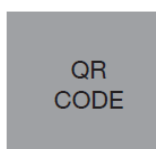
Check to see if you have received your dose. Your dose was delivered correctly if the grey part is visible (see step 3). Also contact your local Lilly office listed in the Information for the patient for further instructions. Until then, store your pen safely to avoid an accidental needle stick injury.

OTHER INFORMATION

- If you have vision problems, DO NOT use your pen without help from a person trained to use the Trulicity pen.

WHERE TO LEARN MORE

- If you have any questions or problems with your Trulicity pen, contact your doctor, pharmacist or nurse.



SCAN THIS CODE TO LAUNCH
www.trulicity.eu

Last revised in January 2021