

Package leaflet: Information for the user

Suboxone 16 mg/4 mg sublingual tablets

buprenorphine / naloxone

Read all of this leaflet carefully before you start taking this medicine because it contains important information for you.

- Keep this leaflet. You may need to read it again.
- If you have any further questions, ask your doctor or pharmacist.
- This medicine has been prescribed for you only. Do not pass it on to others. It may harm them, even if their signs of illness are the same as yours.
- If you get any side effects, talk to your doctor or pharmacist. This includes any possible side effects not listed in this leaflet. See section 4.

What is in this leaflet

1. What Suboxone is and what it is used for
2. What you need to know before you take Suboxone
3. How to take Suboxone
4. Possible side effects
5. How to store Suboxone
6. Contents of the pack and other information

1. What Suboxone is and what it is used for

Suboxone is used to treat dependence on opioid (narcotic) drugs such as heroin or morphine in drug addicts who have agreed to be treated for their addiction. Suboxone is used in adults and adolescents over 15 years of age, who are also receiving medical, social and psychological support.

2. What you need to know before you take Suboxone

Do not take Suboxone

- if you are allergic to buprenorphine, naloxone or any of the other ingredients of this medicine (listed in section 6)
- if you have **serious breathing problems**
- if you have **serious problems with your liver**
- if you are intoxicated due to alcohol or have trembling, sweating, anxiety, confusion, or hallucinations caused by alcohol.
- if you are taking naltrexone or nalmefene for the treatment of alcohol or opioid dependence.

Warnings and precautions

Talk to your doctor before taking Suboxone if you have:

- asthma or other breathing problems
- problems with your liver such as hepatitis
- low blood pressure
- recently suffered a head injury or brain disease
- a urinary disorder (especially linked to enlarged prostate in men)
- any kidney disease
- thyroid problems

- adrenocortical disorder (e.g. Addison's disease)
- depression or other conditions that are treated with antidepressants. The use of these medicines together with Suboxone can lead to serotonin syndrome, a potentially life-threatening condition (see 'Other medicines and Suboxone').

Important things to be aware of:

- An emergency unit should be contacted immediately in case of accidental ingestion or suspicion of ingestion.
- **Additional monitoring**
You may be more closely monitored by your doctor if you are over the age of 65.

- **Misuse and abuse**
This medicine can be a target for people who abuse prescription medicines and should be kept in a safe place to protect it from theft (see section 5). **Do not give this medicine to anyone else.** It can cause death or otherwise harm them.

- **Breathing problems**
Some people have died from respiratory failure (inability to breathe) because they misused buprenorphine or have taken it in combination with other central nervous system depressants, such as alcohol, benzodiazepines (tranquilisers), or other opioids.

This medicine may cause severe, possibly fatal, respiratory depression (reduced ability to breathe) in children and non-dependent people who accidentally or deliberately take it.

- **Dependence**
This medicine can cause dependence.

- **Withdrawal symptoms**
This medicine can cause opioid withdrawal symptoms if you take it too soon after taking opioids. You should leave at least 6 hours after you use a short-acting opioid (e.g. morphine, heroin) or at least 24 hours after you use a long-acting opioid such as methadone.

This medicine can also cause withdrawal symptoms if you stop taking it abruptly. See section 3 'stopping treatment'.

- **Liver damage**
Liver damage has been reported after taking Suboxone, especially when the medicine is misused. This could also be due to viral infections (e.g. chronic hepatitis C), alcohol abuse, anorexia or use of other medicines with the ability to harm your liver (see section 4). **Regular blood tests may be conducted by your doctor to monitor the condition of your liver. Tell your doctor if you have any liver problems before you start treatment with Suboxone.**

- **Blood pressure**
This medicine may cause your blood pressure to drop suddenly, causing you to feel dizzy if you get up too quickly from sitting or lying down.

- **Diagnosis of unrelated medical conditions**
This medicine may mask pain symptoms that could assist in the diagnosis of some diseases. You must tell your doctor that you take this medicine.

Children and adolescents

Do not give this medicine to **children under the age of 15**. If you are between 15 and 18 years old your doctor may monitor you more closely during treatment, because of the lack of data in this age group.

Other medicines and Suboxone

Tell your doctor if you are taking, have recently taken or might take any other medicines.

Some medicines may increase the side effects of Suboxone, these can be serious. Do not take any other medicines whilst taking Suboxone without first talking to your doctor, especially:

- **Benzodiazepines** (used to treat anxiety or sleep disorders) such as diazepam, temazepam, alprazolam. Concomitant use of Suboxone and sedative medicines such as benzodiazepines or related drugs increases the risk of drowsiness, difficulties in breathing (respiratory depression), coma and may be life-threatening. Because of this, concomitant use should only be considered when other treatment options are not possible. However if your doctor does prescribe Suboxone together with sedative medicines the dose and duration of concomitant treatment should be limited by your doctor. Please tell your doctor about all sedative medicines you are taking, and follow your doctor's dose recommendation closely. It could be helpful to inform friends or relatives to be aware of the signs and symptoms stated above. Contact your doctor when experiencing such symptoms.
- **Other medicines that may make you feel sleepy which are** used to treat illnesses such as anxiety, sleeplessness, convulsions/seizures, pain. These types of medicines may reduce your alertness levels making it difficult for you to drive and use machines. They may also cause central nervous system depression, which is very serious. Below is a list of examples of these types of medicines:
 - Other opioid containing medicines such as methadone, certain painkillers and cough suppressants
 - Antidepressants (used to treat depression) such as isocarboxazid, phenelzine, selegiline, tranylcypromine and valproate may increase the effects of this medicine.
 - Sedative H₁ receptor antagonists (used to treat allergic reactions) such as diphenhydramine and chlorphenamine.
 - Barbiturates (used to cause sleep or sedation) such as phenobarbital, secobarbital
 - Tranquilisers (used to cause sleep or sedation) such as chloral hydrate.
- **Anti-depressants** such as moclobemide, tranylcypromine, citalopram, escitalopram, fluoxetine, fluvoxamine, paroxetine, sertraline, duloxetine, venlafaxine, amitriptyline, doxepine, or trimipramine. These medicines may interact with Suboxone and you may experience symptoms such as involuntary, rhythmic contractions of muscles, including the muscles, that control movement of the eye, agitation, hallucinations, coma, excessive sweating, tremor, exaggeration of reflexes, increased muscle tension, body temperature above 38°C. Contact your doctor when experiencing such symptoms.
- Clonidine (used to treat high blood pressure) may extend the effects of this medicine.
- Anti-retrovirals (used to treat HIV) such as ritonavir, nelfinavir, indinavir may increase the effects of this medicine.
- Some antifungal agents (used to treat fungal infections) such as ketoconazole, itraconazole, certain antibiotics, may extend the effects of this medicine.
- Some medicines may decrease the effect of Suboxone. These include medicines used to treat epilepsy (such as carbamazepine and phenytoin), and medicines used to treat tuberculosis (rifampicin).
- Naltrexone and nalmefene (medicines used to treat addictive disorders) may prevent the therapeutic effects of Suboxone. They should not be taken at the same time as Suboxone treatment because you may experience a sudden onset of prolonged and intense withdrawal.

Suboxone with food, drink and alcohol

Do not have alcohol whilst being treated with this medicine. Alcohol may increase drowsiness and may increase the risk of respiratory failure if taken with Suboxone. Do not swallow or consume food or any drink until the tablet is completely dissolved.

Pregnancy and breast-feeding

If you are pregnant or breast-feeding, think you may be pregnant or are planning to have a baby, ask your doctor for advice before taking this medicine. The risks of using Suboxone in pregnant women are not known. Your doctor will decide if your treatment should be continued with an alternative medicine.

When taken during pregnancy, particularly late pregnancy, medicines like Suboxone may cause drug withdrawal symptoms including problems with breathing in your newborn baby. This may appear several days after birth.

Do not breast-feed whilst taking this medicine, as buprenorphine passes into breast milk.

Driving and using machines

Do not drive, cycle, use any tools or machines, or perform dangerous activities until you know how this medicine affects you. Suboxone may cause drowsiness, dizziness or impair your thinking. This may happen more often in the first few weeks of treatment when your dose is being changed, but it can also happen if you drink alcohol or take other sedative medicines at the same time as when you take Suboxone.

Suboxone contains lactose and sodium.

This medicine contains lactose. If you have been told by your doctor that you have an intolerance to some sugars, contact your doctor before taking this medicine.

This medicine contains less than 1 mmol sodium (23 mg) tablet, that is to say essentially ‘sodium-free’.

3. How to take Suboxone

Always take this medicine exactly as your doctor or pharmacist has told you. Check with your doctor or pharmacist if you are not sure.

Your treatment is prescribed and monitored by doctors who are experienced in the treatment of drug dependence.

Your doctor will determine the best dose for you. During your treatment, the doctor may adjust the dose, depending upon your response to treatment.

Starting treatment

The recommended starting dose for adults and adolescents over the age of 15 years is usually two Suboxone 2 mg/0.5 mg sublingual tablets.

This dose may be repeated to twice on day 1 depending on your needs.

You should be aware of the clear signs of withdrawal before taking your first dose of Suboxone. Your doctor will tell you when to take your first dose.

- Starting treatment of Suboxone whilst **dependent on heroin**

If you are dependent upon heroin or a short acting opioid, your first dose should be taken when signs of withdrawal appear, **at least 6 hours after you last used opioids.**

- Starting treatment of Suboxone whilst **dependent on methadone**

If you have been taking methadone or a long acting opioid, the dose of methadone should ideally be reduced to below 30 mg/day before beginning Suboxone therapy. The first dose of Suboxone should be taken when signs of withdrawal appear, and at **least 24 hours after you last used methadone.**

Taking Suboxone

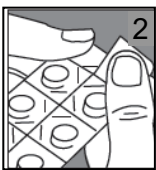
- Take the dose once a day by placing the tablets under the tongue.
- Keep the tablets in place under the tongue until they have **completely dissolved.** This may take 5-10 minutes.
- Do not chew or swallow the tablets, as the medicine will not work and you may get withdrawal symptoms.

Do not consume any food or drink until the tablets have completely dissolved.

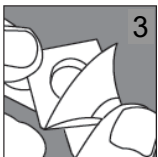
How to remove the tablet from the blister



1 - Do not push the tablet through the foil.



2 - Remove just one section from the blister pack, tearing it along the perforated line.



3 – Starting from the edge where the seal is lifted, pull back the foil on the back to remove the tablet

If the blister is damaged, discard the tablet

Dose adjustment and maintenance therapy:

During the days after you start treatment, your doctor may increase the dose of Suboxone you take according to your needs. If you think that the effect of Suboxone is too strong or too weak, talk to your doctor or pharmacist. **The maximum daily dose is 24 mg buprenorphine.**

After a time of successful treatment, you may agree with your doctor to reduce the dose gradually to a lower maintenance dose.

Stopping treatment

Depending on your condition, the dose of Suboxone may continue to be reduced under careful medical supervision, until eventually it may be stopped.

Do not change the treatment in any way or stop treatment without the agreement of the doctor who is treating you.

If you take more Suboxone than you should

If you or someone else takes too much of this medicine, you must go or be taken immediately to an emergency centre or hospital for treatment as **overdose** with Suboxone may cause serious and life-threatening breathing problems.

Symptoms of overdose may include feeling sleepy and uncoordinated with slowed reflexes, blurred vision, and/or slurred speech. You may be unable to think clearly, and may breathe much slower than is normal for you.

If you forget to take Suboxone

Tell your doctor as soon as possible if you miss a dose.

If you stop taking Suboxone

Do not change the treatment in any way or stop treatment without the agreement of the doctor who is treating you. **Stopping treatment suddenly may cause withdrawal symptoms.**

If you have any further questions on the use of this medicine, ask your doctor or pharmacist.

4. Possible side effects

Like all medicines, this medicine can cause side effects, although not everybody gets them.

Tell your doctor immediately or seek urgent medical attention if you experience side effects, such as:

- swelling of the face, lips, tongue or throat which may cause difficulty in swallowing or breathing, severe hives/nettle rash. These may be signs of a life-threatening allergic reaction.
- feeling sleepy and uncoordinated, have blurred vision, have slurred speech, cannot think well or clearly, or your breathing gets much slower than is normal for you.

Also tell your doctor immediately if you experience side effects such as:

- severe tiredness, itching with yellowing of skin or eyes. These may be symptoms of liver damage.
- seeing or hearing things that are not there (hallucinations).

Side effects reported with Suboxone

<i>Very common side effects (may affect more than one in 10 people):</i>
Insomnia (inability to sleep), constipation, nausea, excessive sweating, headache, drug

withdrawal syndrome
<i>Common side effects (may affect up to 1 in 10 people):</i>
Weight loss, swelling of the hands and feet, drowsiness, anxiety, nervousness, tingling, depression, decreased sexual drive, increase in muscle tension, abnormal thinking, increased tearing (watering eyes) or other tearing disorders, blurred vision, flushing, increased blood pressure, migraines, runny nose, sore throat and painful swallowing, increased cough, upset stomach or other stomach discomfort, diarrhoea, abnormal liver function, flatulence, vomiting, rash, itching, hives, pain, joint pain, muscle pain, leg cramps (muscle spasm), difficulty in getting or keeping an erection, urine abnormality, abdominal pain, back pain, weakness, infection, chills, chest pain, fever, flu-like symptoms, feeling of general discomfort, accidental injury caused by loss of alertness or co-ordination, faintness and dizziness.
<i>Uncommon side effects (may affect up to 1 in 100 people):</i>
Swollen glands (lymph nodes), agitation, tremor, abnormal dream, excessive muscle activity, depersonalisation (not feeling like yourself), medicine dependence, amnesia (memory disturbance), loss of interest, exaggerated feeling of wellbeing, convulsion (fits), speech disorder, small pupil size, difficulty urinating, eye inflammation or infection, rapid or slow heartbeat, low blood pressure, palpitations, heart attack, chest tightness, shortness of breath, asthma, yawning, pain and sores in mouth, tongue discolouration, acne, skin nodule, hair loss, dry or scaling skin, inflammation of joints, urinary tract infection, abnormal blood tests, blood in urine, abnormal ejaculation, menstrual or vaginal problems, kidney stone, protein in your urine, painful or difficult urination, sensitivity to heat or cold, heat stroke, loss of appetite, feelings of hostility.
<i>Not known (frequency cannot be estimated from the available data):</i>
Sudden withdrawal syndrome caused by taking Suboxone too soon after use of illicit opioids, drug withdrawal syndrome in new-born babies, slow or difficult breathing, liver injury with or without jaundice, hallucinations, swelling of face and throat or life threatening allergic reactions, drop in blood pressure on changing position from sitting or lying down to standing.

Misusing this medicine by injecting it can cause withdrawal symptoms, infections, other skin reactions and potentially serious liver problems (see Warnings and precautions).

Reporting of side effects

If you get any side-effects, talk to your doctor or pharmacist. This includes any possible side-effects not listed in this leaflet. You can also report side-effects directly via the Yellow Card Scheme website: www.mhra.gov.uk/yellowcard or search for MHRA Yellow Card in the Google Play or Apple App Store. By reporting side affects you can help provide more information on the safety of this medicine.

5. How to store Suboxone

Keep this medicine out of the sight and reach of children and other household members.

Do not use this medicine after the expiry date which is stated on the carton. The expiry date refers to the last day of that month

This medicine does not require any special storage conditions. However, Suboxone can be a target for people who abuse prescription medicine. Keep this medicine in a safe place to protect it from theft.

Store the blister safely.

Never open the blister in advance.

Do not take this medicine in front of children.

An emergency unit should be contacted immediately in case of accidental ingestion or suspicion of ingestion.

Do not throw away any medicines via wastewater or household waste. Ask your pharmacist how to throw away medicines you no longer use. These measures will help to protect the environment.

6. Content of the pack and other information

What Suboxone contains

- The active substances are buprenorphine and naloxone.
Each 16 mg/4 mg sublingual tablet contains 16 mg buprenorphine (as hydrochloride) and 4 mg naloxone (as hydrochloride dihydrate).
- The other ingredients are lactose monohydrate, mannitol, maize starch, povidone K30, citric acid anhydrous, sodium citrate, magnesium stearate, acesulfame potassium and natural lemon and lime flavour.

What Suboxone looks like and contents of the pack

Suboxone 16 mg/4 mg sublingual tablets are white round biconvex tablets of 10.5 mm with “N16” debossed on one side.

Packed in packs of 7 and 28 tablets.

Not all pack sizes may be marketed.

Marketing Authorisation Holder

Indivior Europe Limited
27 Windsor Place
Dublin 2
Ireland

Manufacturer

Reckitt Benckiser Healthcare (UK) Ltd,
Dansom Lane,
Hull,
East Yorkshire HU8 7DS,
United Kingdom.

Or

Indivior Europe Limited
27 Windsor Place
Dublin 2
Ireland

For any information about this medicine, please contact the local representative of the Marketing Authorisation Holder:

België/Belgique/Belgien

Indivior Europe Limited
Tél/Tel: 0800 780 41
e-mail: PatientSafetyRow@indivior.com

Lietuva

Indivior Europe Limited
Tel: 880030793
e-mail: PatientSafetyRoW@indivior.com

България

Indivior Europe Limited
Тел.: 00800 110 4104
e-mail: PatientSafetyRoW@indivior.com

Česká republika

Indivior Europe Limited
Tel: 800 143 737
e-mail: PatientSafetyRoW@indivior.com

Danmark

Indivior Europe Limited
Tlf: 80826653
e-mail: PatientSafetyRoW@indivior.com

Deutschland

Indivior Europe Limited
Tel: 800 181 3799
e-mail: PatientSafetyRoW@indivior.com

Eesti

Indivior Europe Limited
Tel: 8000041004
e-mail: PatientSafetyRoW@indivior.com

Ελλάδα

Indivior Europe Limited
Τηλ: 800 270 81 901
e-mail: PatientSafetyRoW@indivior.com

España

Indivior Europe Limited
Tel: 900 994 121
e-mail: PatientSafetyRoW@indivior.com

France

Indivior Europe Limited
Tél: 0800 909 972
e-mail: PatientSafetyFrance@indivior.com

Hrvatska

Indivior Europe Limited
Tel: + +0800 222 899
e-mail: PatientSafetyRoW@indivior.com

Ireland

Indivior Europe Limited
Tel: 1800554156
e-mail: PatientSafetyRoW@indivior.com

Ísland

Indivior Europe Limited
Sími: 8009875
Netfang: PatientSafetyRoW@indivior.com

Luxembourg/Luxemburg

Indivior Europe Limited
Tél/Tel: 800 245 43
e-mail: PatientSafetyRow@indivior.com

Magyarország

Indivior Europe Limited
Tel.: 6800 19301
e-mail: PatientSafetyRoW@indivior.com

Malta

Indivior Europe Limited
Tel: 80062185
e-mail: PatientSafetyRoW@indivior.com

Nederland

Indivior Europe Limited
Tel: 0800 022 87 83
e-mail: PatientSafetyRow@indivior.com

Norge

Indivior Europe Limited
Tlf: 80016773
e-mail: PatientSafetyRoW@indivior.com

Österreich

Indivior Europe Limited
Tel: 800 296551
e-mail: PatientSafetyRoW@indivior.com

Polska

Indivior Europe Limited
Tel.: 0800 4111237
e-mail: PatientSafetyRoW@indivior.com

Portugal

Indivior Europe Limited
Tel: 800 841 042
e-mail: PatientSafetyRoW@indivior.com

România

Indivior Europe Limited
Tel: 800 477 029
e-mail: PatientSafetyRoW@indivior.com

Slovenija

Indivior Europe Limited
Tel: 080080715
e-mail: PatientSafetyRoW@indivior.com

Slovenská republika

Indivior Europe Limited
Tel: 800110286
e-mail: PatientSafetyRoW@indivior.com

Italia

Indivior Europe Limited
Tel: 800 789 822
e-mail: PatientSafetyRoW@indivior.com

Κύπρος

Indivior Europe Limited
Τηλ: 800 270 81 901
e-mail: PatientSafetyRoW@indivior.com

Latvija

Indivior Europe Limited
Tel: 800 05612
e-mail: PatientSafetyRoW@indivior.com

Suomi/Finland

Indivior Europe Limited
Puh/Tel: 0800417489
e-mail: PatientSafetyRoW@indivior.com

Sverige

Indivior Europe Limited
Tel: 020791680
e-mail: PatientSafetyRoW@indivior.com

United Kingdom

Indivior Europe Limited
Tel: 0808 234 9243
e-mail: PatientSafetyRoW@indivior.com

This leaflet was last revised in August 2020.

Detailed information on this medicine is available on the website of the European Medicines Agency
<http://www.ema.europa.eu/>