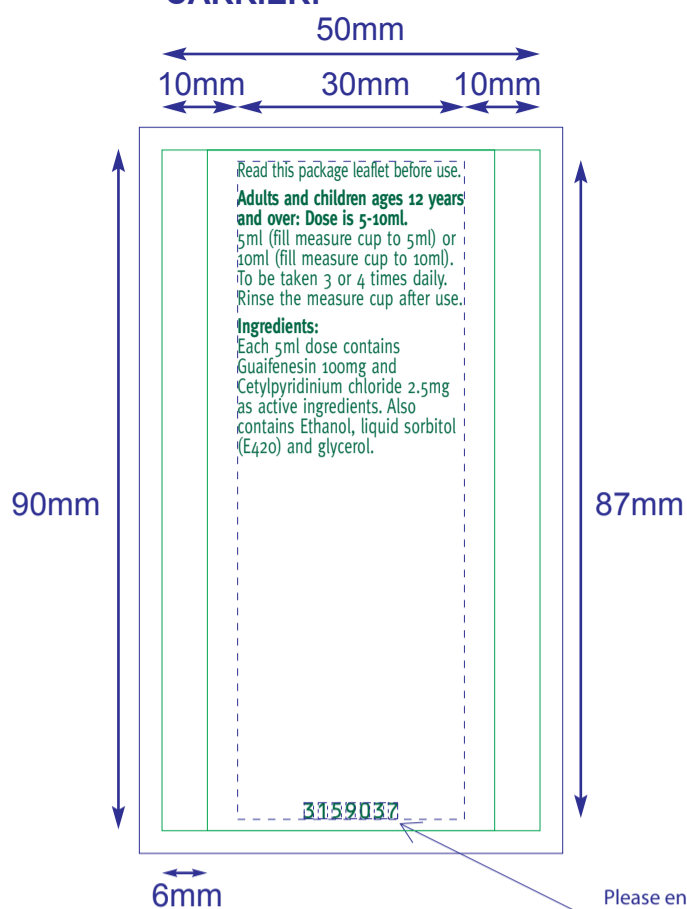
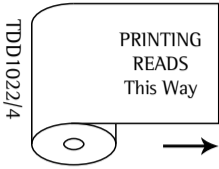


CARRIER:



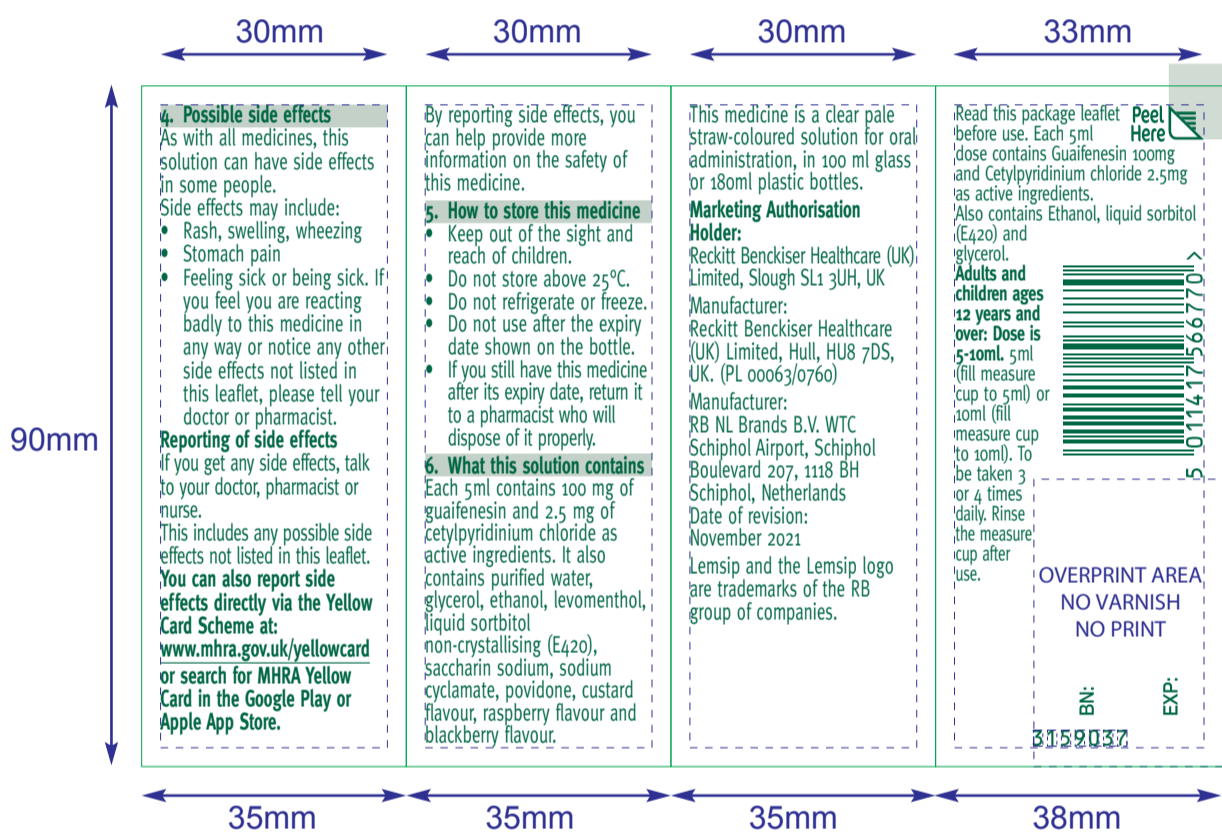
Read this package leaflet before use.
Adults and children ages 12 years and over: Dose is 5-10ml.
 5ml (fill measure cup to 5ml) or 10ml (fill measure cup to 10ml). To be taken 3 or 4 times daily. Rinse the measure cup after use.
Ingredients:
 Each 5ml dose contains Guaifenesin 100mg and Cetylpyridinium chloride 2.5mg as active ingredients. Also contains Ethanol, liquid sorbitol (E420) and glycerol.

3159037



Please ensure OLV code is present on both carrier page and leaflet face as indicated.

LEAFLET FACE:



4. Possible side effects
 As with all medicines, this solution can have side effects in some people. Side effects may include:
 • Rash, swelling, wheezing
 • Stomach pain
 • Feeling sick or being sick. If you feel you are reacting badly to this medicine in any way or notice any other side effects not listed in this leaflet, please tell your doctor or pharmacist.
Reporting of side effects
 If you get any side effects, talk to your doctor, pharmacist or nurse. This includes any possible side effects not listed in this leaflet. You can also report side effects directly via the Yellow Card Scheme at: www.mhra.gov.uk/yellowcard or search for MHRA Yellow Card in the Google Play or Apple App Store.

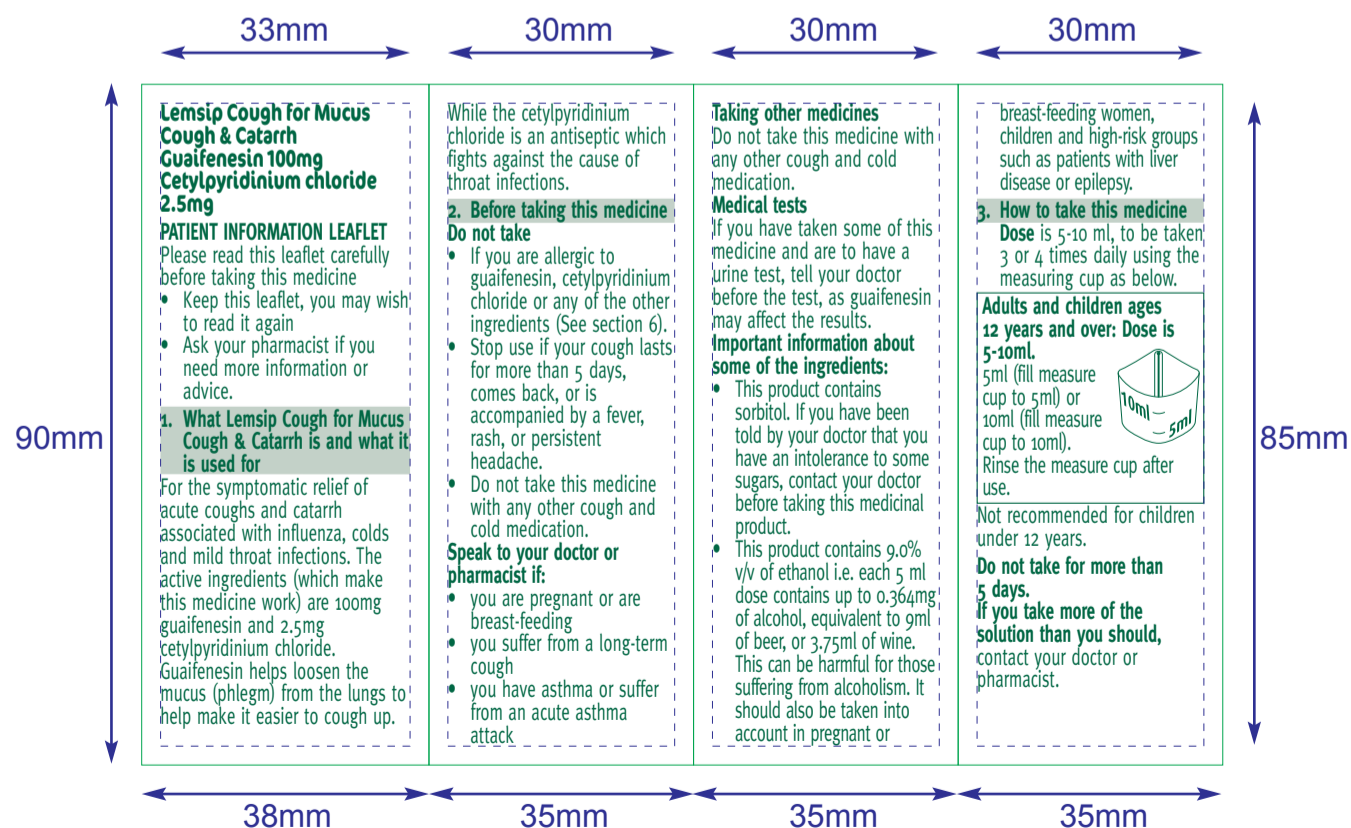
By reporting side effects, you can help provide more information on the safety of this medicine.
5. How to store this medicine
 • Keep out of the sight and reach of children.
 • Do not store above 25°C.
 • Do not refrigerate or freeze.
 • Do not use after the expiry date shown on the bottle.
 • If you still have this medicine after its expiry date, return it to a pharmacist who will dispose of it properly.
6. What this solution contains
 Each 5ml contains 100 mg of guaifenesin and 2.5 mg of cetylpyridinium chloride as active ingredients. It also contains purified water, glycerol, ethanol, levomenthol, liquid sorbitol non-crystallising (E420), saccharin sodium, sodium cyclamate, povidone, custard flavour, raspberry flavour and blackberry flavour.

This medicine is a clear pale straw-coloured solution for oral administration, in 100 ml glass or 180ml plastic bottles.
Marketing Authorisation Holder:
 Reckitt Benckiser Healthcare (UK) Limited, Slough SL1 3UH, UK
Manufacturer:
 Reckitt Benckiser Healthcare (UK) Limited, Hull, HU8 7DS, UK. (PL 00063/0760)
Manufacturer:
 RB NL Brands B.V. WTC Schiphol Airport, Schiphol Boulevard 207, 1118 BH Schiphol, Netherlands
 Date of revision: November 2021
 Lemsip and the Lemsip logo are trademarks of the RB group of companies.

Read this package leaflet before use. Each 5ml dose contains Guaifenesin 100mg and Cetylpyridinium chloride 2.5mg as active ingredients. Also contains Ethanol, liquid sorbitol (E420) and glycerol.
Adults and children ages 12 years and over: Dose is 5-10ml. 5ml (fill measure cup to 5ml) or 10ml (fill measure cup to 10ml). To be taken 3 or 4 times daily. Rinse the measure cup after use.
 Peel Here

 OVERPRINT AREA
 NO VARNISH
 NO PRINT
 BN: 3159037
 EXP:

LEAFLET REVERSE:



Lemsip Cough for Mucus Cough & Catarrh
Guaifenesin 100mg
Cetylpyridinium chloride 2.5mg
PATIENT INFORMATION LEAFLET
 Please read this leaflet carefully before taking this medicine
 • Keep this leaflet, you may wish to read it again
 • Ask your pharmacist if you need more information or advice.
1. What Lemsip Cough for Mucus Cough & Catarrh is and what it is used for
 For the symptomatic relief of acute coughs and catarrh associated with influenza, colds and mild throat infections. The active ingredients (which make this medicine work) are 100mg guaifenesin and 2.5mg cetylpyridinium chloride. Guaifenesin helps loosen the mucus (phlegm) from the lungs to help make it easier to cough up.

White the cetylpyridinium chloride is an antiseptic which fights against the cause of throat infections.
2. Before taking this medicine
Do not take
 • If you are allergic to guaifenesin, cetylpyridinium chloride or any of the other ingredients (See section 6).
 • Stop use if your cough lasts for more than 5 days, comes back, or is accompanied by a fever, rash, or persistent headache.
 • Do not take this medicine with any other cough and cold medication.
Speak to your doctor or pharmacist if:
 • you are pregnant or are breast-feeding
 • you suffer from a long-term cough
 • you have asthma or suffer from an acute asthma attack

Taking other medicines
 Do not take this medicine with any other cough and cold medication.
Medical tests
 If you have taken some of this medicine and are to have a urine test, tell your doctor before the test, as guaifenesin may affect the results.
Important information about some of the ingredients:
 • This product contains sorbitol. If you have been told by your doctor that you have an intolerance to some sugars, contact your doctor before taking this medicinal product.
 • This product contains 9.0% v/v of ethanol i.e. each 5 ml dose contains up to 0.364mg of alcohol, equivalent to 9ml of beer, or 3.75ml of wine. This can be harmful for those suffering from alcoholism. It should also be taken into account in pregnant or

breast-feeding women, children and high-risk groups such as patients with liver disease or epilepsy.
3. How to take this medicine
 Dose is 5-10 ml, to be taken 3 or 4 times daily using the measuring cup as below.
Adults and children ages 12 years and over: Dose is 5-10ml.
 5ml (fill measure cup to 5ml) or 10ml (fill measure cup to 10ml). Rinse the measure cup after use.

 Not recommended for children under 12 years.
Do not take for more than 5 days.
If you take more of the solution than you should, contact your doctor or pharmacist.

CUSTOMER INFO:
 Minimum Point Size = 8.00pt