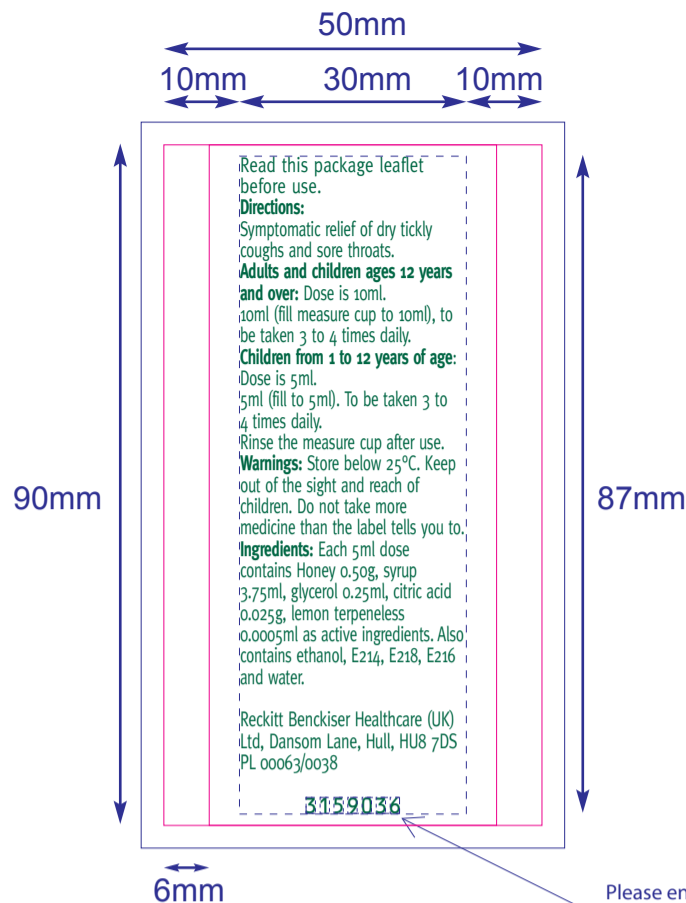
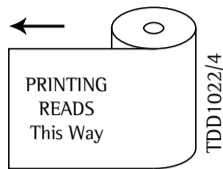


CARRIER:



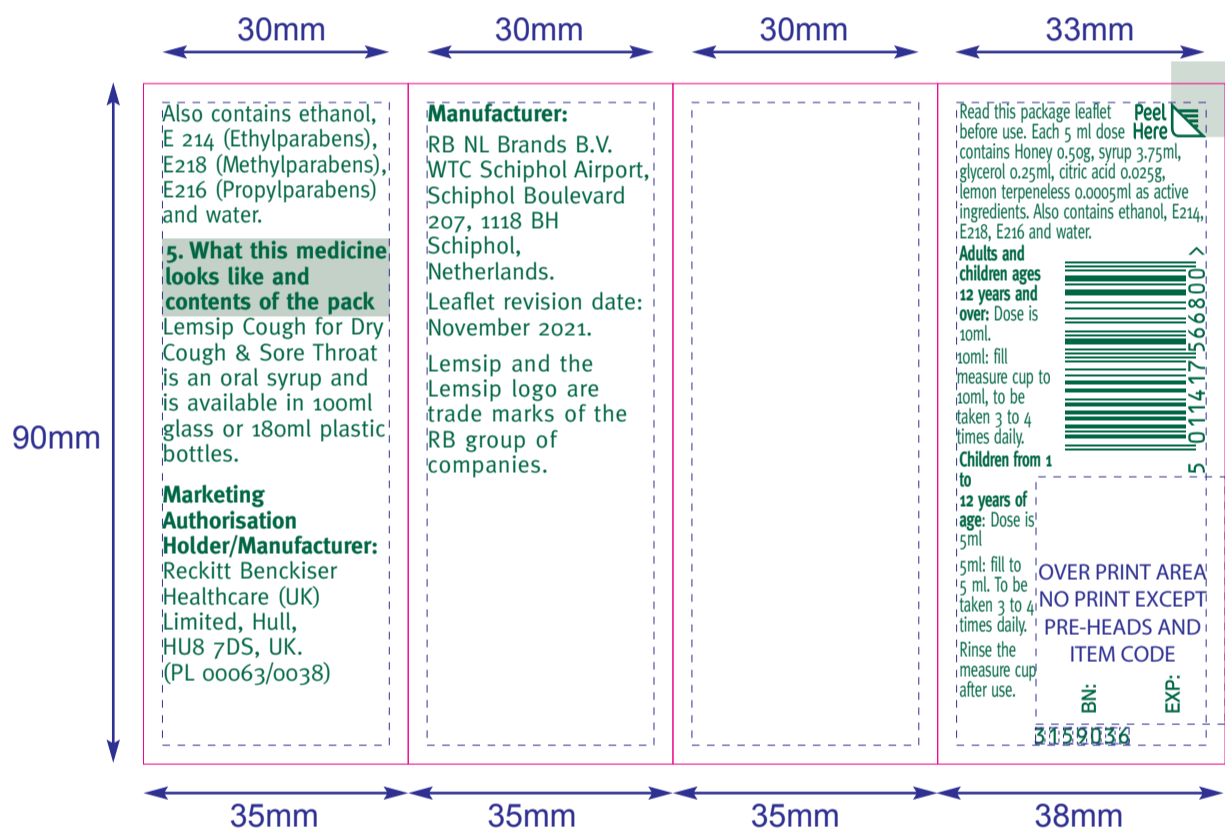
Read this package leaflet before use.
Directions:
 Symptomatic relief of dry tickly coughs and sore throats.
Adults and children ages 12 years and over: Dose is 10ml. 10ml (fill measure cup to 10ml), to be taken 3 to 4 times daily.
Children from 1 to 12 years of age: Dose is 5ml. 5ml (fill to 5ml). To be taken 3 to 4 times daily.
 Rinse the measure cup after use.
Warnings: Store below 25°C. Keep out of the sight and reach of children. Do not take more medicine than the label tells you to.
Ingredients: Each 5ml dose contains Honey 0.50g, syrup 3.75ml, glycerol 0.25ml, citric acid 0.025g, lemon terpeneless 0.0005ml as active ingredients. Also contains ethanol, E214, E218, E216 and water.
 Reckitt Benckiser Healthcare (UK) Ltd, Dansom Lane, Hull, HU8 7DS PL 00063/0038

3159036



Please ensure OLV code is present on both carrier page and leaflet face as indicated.

LEAFLET FACE:



Also contains ethanol, E 214 (Ethylparabens), E218 (Methylparabens), E216 (Propylparabens) and water.

5. What this medicine looks like and contents of the pack
 Lemsip Cough for Dry Cough & Sore Throat is an oral syrup and is available in 100ml glass or 180ml plastic bottles.

Marketing Authorisation Holder/Manufacturer:
 Reckitt Benckiser Healthcare (UK) Limited, Hull, HU8 7DS, UK. (PL 00063/0038)

Manufacturer:
 RB NL Brands B.V. WTC Schiphol Airport, Schiphol Boulevard 207, 1118 BH Schiphol, Netherlands.
 Leaflet revision date: November 2021.
 Lemsip and the Lemsip logo are trade marks of the RB group of companies.

Read this package leaflet before use. Each 5 ml dose contains Honey 0.50g, syrup 3.75ml, glycerol 0.25ml, citric acid 0.025g, lemon terpeneless 0.0005ml as active ingredients. Also contains ethanol, E214, E218, E216 and water.
Adults and children ages 12 years and over: Dose is 10ml. 10ml: fill measure cup to 10ml, to be taken 3 to 4 times daily.
Children from 1 to 12 years of age: Dose is 5ml. 5ml: fill to 5 ml. To be taken 3 to 4 times daily.
 Rinse the measure cup after use.

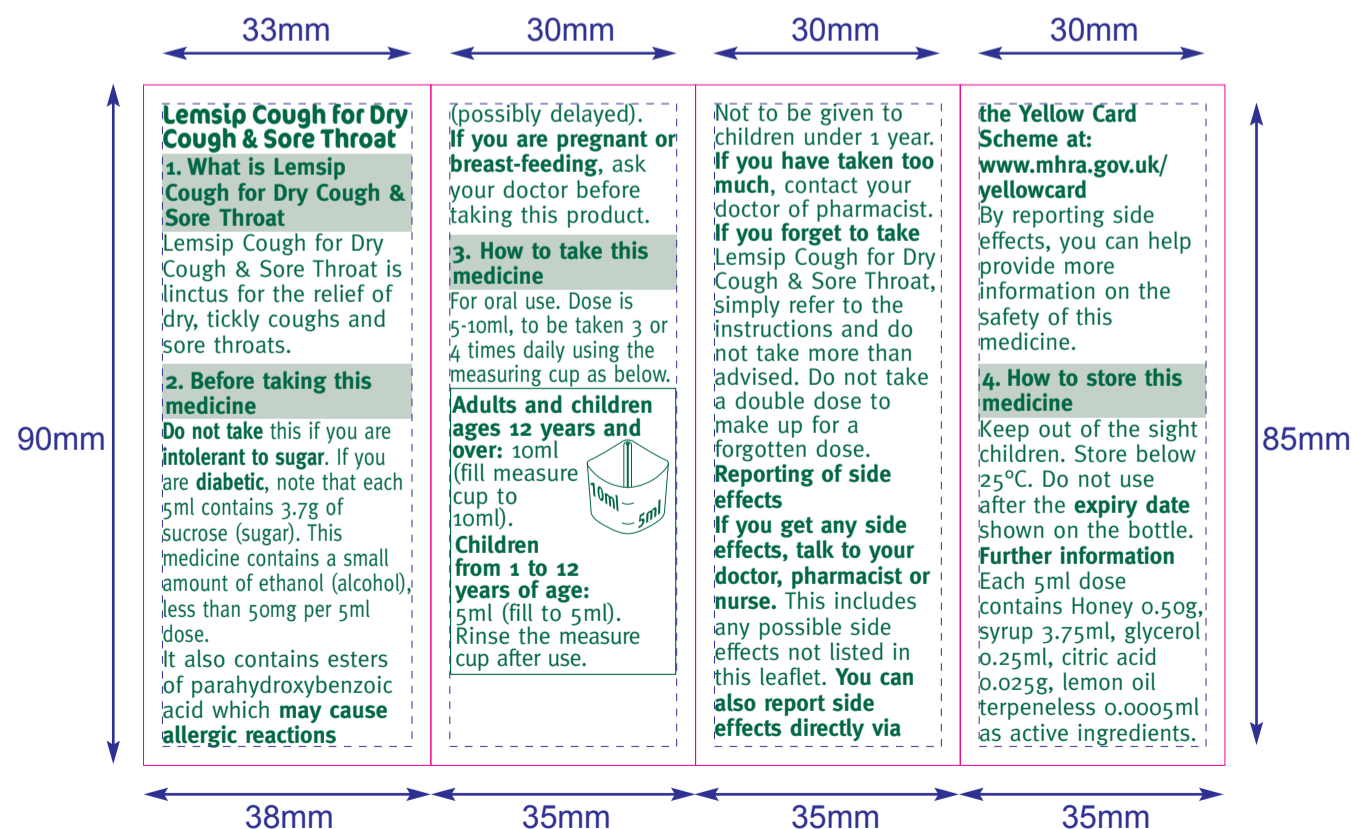
Peel Here



OVER PRINT AREA
 NO PRINT EXCEPT
 PRE-HEADS AND
 ITEM CODE

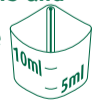
3159036

LEAFLET REVERSE:



Lemsip Cough for Dry Cough & Sore Throat
1. What is Lemsip Cough for Dry Cough & Sore Throat
 Lemsip Cough for Dry Cough & Sore Throat is linctus for the relief of dry, tickly coughs and sore throats.
2. Before taking this medicine
 Do not take this if you are intolerant to sugar. If you are diabetic, note that each 5ml contains 3.7g of sucrose (sugar). This medicine contains a small amount of ethanol (alcohol), less than 50mg per 5ml dose. It also contains esters of parahydroxybenzoic acid which may cause allergic reactions

(possibly delayed).
If you are pregnant or breast-feeding, ask your doctor before taking this product.
3. How to take this medicine
 For oral use. Dose is 5-10ml, to be taken 3 or 4 times daily using the measuring cup as below.
Adults and children ages 12 years and over: 10ml (fill measure cup to 10ml).
Children from 1 to 12 years of age: 5ml (fill to 5ml). Rinse the measure cup after use.



Not to be given to children under 1 year.
If you have taken too much, contact your doctor of pharmacist.
If you forget to take Lemsip Cough for Dry Cough & Sore Throat, simply refer to the instructions and do not take more than advised. Do not take a double dose to make up for a forgotten dose.
Reporting of side effects
If you get any side effects, talk to your doctor, pharmacist or nurse. This includes any possible side effects not listed in this leaflet. **You can also report side effects directly via**

the Yellow Card Scheme at:
www.mhra.gov.uk/yellowcard
 By reporting side effects, you can help provide more information on the safety of this medicine.
4. How to store this medicine
 Keep out of the sight of children. Store below 25°C. Do not use after the expiry date shown on the bottle.
Further information
 Each 5ml dose contains Honey 0.50g, syrup 3.75ml, glycerol 0.25ml, citric acid 0.025g, lemon oil terpeneless 0.0005ml as active ingredients.

CUSTOMER INFO:
 Minimum Point Size = 8.00pt