

IBUGEL FORTE

ibuprofen 10% w/w

Read all of this leaflet carefully before you start using this medicine because it contains important information for you.

Keep this leaflet. You may need to read it again. If you have any further questions ask your doctor or pharmacist. This medicine has been prescribed for you. Do not pass it on to others. It may harm them, even if their signs of illness are the same as yours. If you get any side effects, talk to your doctor or pharmacist. This includes any possible side effects not listed in this leaflet. See Section 4.

In this leaflet:

1. What Ibugel Forte is and what it is used for
2. What you need to know before you use Ibugel Forte
3. How to use Ibugel Forte
4. Possible side effects
5. How to store Ibugel Forte
6. Contents of the pack and other information

1. WHAT IBUGEL FORTE IS AND WHAT IT IS USED FOR

- Ibugel Forte is an anti-inflammatory painkiller applied to, and absorbed through, the skin.
- It is for the treatment of the following conditions involving the musculoskeletal system:
 - backache
 - rheumatic or muscular pain
 - sprains
 - strains
 - neuralgia.
- It is also for pain relief in common arthritic conditions.
- Ibugel Forte is recommended for use by **adults, the elderly and children over the age of 12 years**. Children under the age of 12 may also use it if recommended by their doctor.
- The **active ingredient** in this product is ibuprofen. This is one of a group of medicines known as **non-steroidal anti-inflammatory drugs (NSAIDs)**.
- Ibuprofen works by:
 - relieving pain
 - reducing swelling and inflammation.

2. WHAT YOU NEED TO KNOW BEFORE YOU USE IBUGEL FORTE

Do not use Ibugel Forte:

- if you are **allergic (hypersensitive)** to ibuprofen or any of the other ingredients of Ibugel Forte listed in Section 6;
- if you are **asthmatic**, or suffer from **rhinitis** (allergic runny nose) or **urticaria** (hives) **and** have ever had a bad reaction to aspirin, ibuprofen or other NSAIDs in the past;
- if you are **pregnant or breast-feeding**;
- on broken, damaged, infected or diseased skin.

Before applying this product for the first time, make sure it is suitable for you to use:

Because Ibugel Forte is delivered through the skin, directly over the painful area, there is less risk of the complications that sometimes occur when ibuprofen (or a similar anti-inflammatory painkiller) is taken by mouth. However, in rare cases you may be at risk:

- if you have a stomach ulcer (also called a peptic or gastric ulcer);
- if you have ever had kidney problems;
- if you have ever had asthma;
- if you have ever had a bad reaction to aspirin or ibuprofen taken by mouth.

If any of the above apply to you, only use this product on advice from your doctor.

Warnings and precautions

Do not smoke or go near naked flames - risk of severe burns. Fabric (clothing, bedding, dressings etc) that has been in contact with this product burns more easily and is a serious fire hazard. Washing clothing and bedding may reduce product build-up but not totally remove it.

Take special care when using this product:

- Use it only on the skin.
- Do not use it on children under 12 years old unless advised by a doctor.
- Keep the gel away from the eyes, nose and mouth.

Using other medicines

- Interaction between Ibugel Forte and blood pressure lowering drugs and anticoagulants (medicines that stop blood clotting) is possible, in theory, although very unlikely. If you would like more advice about this, speak to your doctor or pharmacist.
- If you are also taking aspirin or other NSAIDs by mouth, discuss this beforehand with your doctor or pharmacist because these may increase the risk of undesirable effects.
- Please tell your doctor or pharmacist if you are taking or have recently taken any other medicines including other medicines obtained without prescription.

Pregnancy and breast-feeding

You should not use Ibugel Forte if you are pregnant or breast-feeding.

Driving and using machinery

Using this product is not known to affect your ability to drive or use machinery.

3. HOW TO USE IBUGEL FORTE

Before using this tube of gel for the first time, open it as follows:

- Unscrew the cap, turn it upside down and then use the sharp point of the cap to pierce the membrane in the neck of the tube.

The tube squeezer key:

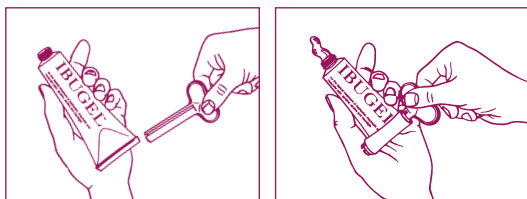
To make Ibugel Forte easier and more economical to use, a red tube squeezer key has been provided. Once fitted to the tube, simply turning the key will dispense the gel more easily for patients who experience difficulties in squeezing tubes. For economy, the key will also help expel the last few grams of Ibugel Forte when the tube is nearly empty.

To fit the tube squeezer key:

- Ensure that the tube nozzle has been pierced using the point of the cap.
- Slide the slit of the key over the folded end of the tube.
- Carefully turn the key to roll up the tube until the required amount of gel has been expelled.

continued...

- Always replace the cap after use, leaving the key in place on the end of the tube.



To use the gel (for adults, the elderly and children over 12 years old):

- Use the gel up to three times a day, or as often as advised by your doctor.
- Lightly apply the gel to intact skin over the painful area.
- Squeeze out a 2 to 5 cm length of gel (50 to 125 mg ibuprofen) onto the affected area, enough to thinly cover it, then massage gently until absorbed.
- Wash hands after use, unless treating them.
- Carry on using the gel in this way until your condition gets better (you may find you need to use it for a few weeks, and your doctor may want you to continue using it for longer than this).
- If your symptoms worsen or continue for more than a few weeks, discuss this with your doctor before continuing treatment.

If the gel comes into contact with broken skin or gets into the eyes, nose or mouth

- The product may cause irritation if it comes into contact with broken skin or gets into the eyes, nose or mouth. If this happens, rinse the affected areas with plenty of water. If rinsing one eye, take care to avoid washing product into the other eye. If irritation persists, tell your doctor or pharmacist.

If the gel is accidentally swallowed

- Symptoms may include headache, vomiting, drowsiness and low blood pressure.
- If you experience any of these symptoms, contact a doctor or hospital straight away.

If you forget to use this product

Do not worry if you occasionally forget to use this product, just carry on using it when you remember. If you have any further questions on the use of this product, ask your doctor or pharmacist.

4. POSSIBLE SIDE EFFECTS

Like all medicines, Ibugel Forte can cause side effects, although not everybody gets them. All side effects listed are of unknown frequency (frequency cannot be estimated from the available data).

Ibugel Forte may cause the following side effects:

- Occasionally, mild skin rashes, itching or irritation can sometimes occur at the site of application.
- Skin becomes sensitive to light.

If this is unacceptable, or persists, stop using the product and tell your doctor or pharmacist.

If you experience any of the following side effects, stop using Ibugel Forte immediately and tell your doctor:

- Allergic reactions (particularly in people who have a history of asthma or allergic problems), such as:
 - unexplained runny nose and watery eyes, or, in more serious cases asthma or aggravated asthma involving breathing difficulties, wheezing or chest tightness;
 - generalised allergic skin reactions involving itch, swelling, inflammation, redness and perhaps blistering and light sensitivity; other more serious generalised allergic reactions

possibly involving unexplained nausea and vomiting, swollen eyes, face or tongue, difficulty swallowing, dizziness or light-headedness. Unconsciousness could perhaps occur in the most serious cases.

- **Kidney problems** (particularly in people who have a history of kidney disease), such as:
 - decreased urine volume;
 - loss of appetite / weight loss;
 - swelling to abdomen.
- **Problems with the digestive system** (particularly in people who have a history of stomach ulcers etc), such as:
 - stomach pain;
 - heartburn / indigestion.

If any of the side effects get serious, or if you notice any side effects not listed in this leaflet, please tell your doctor or pharmacist.

Reporting of side effects

If you get any side effects, talk to your doctor, pharmacist or nurse. This includes any possible side effects not listed in this leaflet. You can also report side effects directly via the Yellow Card Scheme at: www.mhra.gov.uk/yellowcard or search for MHRA Yellow Card in the Google Play or Apple App Store. By reporting side effects you can help provide more information on the safety of this medicine.

5. HOW TO STORE IBUGEL

- Keep out of the sight and reach of children.
- Always replace the cap tightly after use.
- Do not store the product above 25°C.
- Do not use after the expiry date shown on the fold of the tube and the carton. The expiry date refers to the last day of that month.
- Medicines should not be disposed of via wastewater or household waste. Ask your pharmacist how to dispose of medicines no longer required. These measures will help to protect the environment.

6. CONTENTS OF THE PACK AND OTHER INFORMATION

What Ibugel Forte contains:

The **active ingredient** is **ibuprofen** (10% w/w). The **other ingredients** are industrial methylated spirit, carbomers, diethylamine and purified water.

What Ibugel Forte looks like and contents of the pack

- The product is a clear or slightly hazy gel that is non-greasy and contains no fragrance.
- The gel is available in tubes containing 100g. The packs also contain a tube key.

The Marketing Authorisation holder is Dermal Laboratories, Tatmore Place, Gosmore, Hitchin, Herts, SG4 7QR, UK.

The Manufacturer is Aeropak, Viking Road, Great Yarmouth, Norfolk, NR31 ONU, UK.

This leaflet was last revised in March 2021.

To listen to or request a copy of this leaflet in Braille, large print or audio, please call free of charge: 0800 198 5000 (UK only).

Please be ready to give the following information: Ibugel Forte, 00173/0175. This is a service provided by the Royal National Institute of Blind People (RNIB).